

PORT AUTHORITY.

Port Authority® Ladies SuperPro™ Twill Shirt. L663



A heavy hitter in performance, our SuperPro Twill Shirt easily resists stains and wrinkles while releasing stains. Designed for comfort, this versatile shirt functions well in almost any work environment from the office to food service.

- 3.4-ounce, 55/45 cotton/poly
- Open collar
- Bust darts
- Back shoulder pleats
- Dyed-to-match buttons
- Rounded adjustable cuffs

CARE INSTRUCTIONS

Machine wash warm with like colors. Non-chlorine bleach if needed. Tumble dry low. Remove promptly and hang. Warm iron if needed.

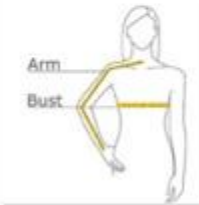


front



back

HOW TO MEASURE



BUST

Measure under the arm and around the fullest part of the bust with arms down, keeping tape horizontal.

ARM

Place hand on hip. Start at the center of the back of the neck and measure across the shoulder, to the elbow, and then down to the wrist.

SIZE CHART

	XS	S	M	L	XL	XXL	3XL	4XL
Size	2	4-6	8-10	12-14	16-18	20-22	24-26	28-30
Bust	32-34	35-36	37-38	39-41	42-44	45-47	48-51	52-55
Arm	30-30 3/4	30 3/4-31 1/2	31 1/2-32	32-32 1/2	32 1/2-33	33-33 3/8	33 3/8-33 3/4	33 3/4-34 1/2

COLOR INFORMATION



PORT AUTHORITY.

Port Authority® Ladies Short Sleeve SuperPro™ Twill Shirt. L664



A heavy hitter in performance, our SuperPro Twill Shirt easily resists stains and wrinkles while releasing stains. Designed for comfort, this versatile shirt functions well in almost any work environment from the office to food service.

- 3.4-ounce, 55/45 cotton/poly
- Open collar
- Bust darts
- Back shoulder pleats
- Dyed-to-match buttons
- Turned-up sleeve cuff hems

CARE INSTRUCTIONS

Machine wash warm with like colors. Non-chlorine bleach if needed. Tumble dry low. Remove promptly and hang. Warm iron if needed.

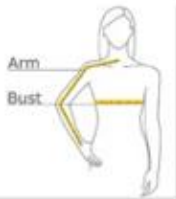


front



back

HOW TO MEASURE



BUST

Measure under the arm and around the fullest part of the bust with arms down, keeping tape horizontal.

ARM

Place hand on hip. Start at the center of the back of the neck and measure across the shoulder, to the elbow, and then down to the wrist.

SIZE CHART

	XS	S	M	L	XL	XXL	3XL	4XL
Size	2	4-6	8-10	12-14	16-18	20-22	24-26	28-30
Bust	32-34	35-36	37-38	39-41	42-44	45-47	48-51	52-55

COLOR INFORMATION





Crafted in a heavier knit, this refined polo is just as comfortable as the classics from which it was inspired. The easy-moving fabric offers moisture wicking when the heat is on. The black satin-finished rimmed buttons on the placket and back collar extend a style-forward feel on the outside, while a dyed-to-match satin-twill neck tape lines the inside.

Fabric+Weight

- 8.1-ounce, 58/39/3 cotton/poly/spandex diamond pique

Features+Benefits

- Moisture-wicking
- Button-backed, ribbed collar
- Dyed-to-match satin twill neck tape
- 5-button placket
- Rimmed, black satin-finished buttons
- Ribbed cuffs
- Straight hem

CARE INSTRUCTIONS

Machine Wash Cold With Like Colors. Do Not Use Fabric Softener. Do Not Bleach. Tumble Dry Low. Warm Iron If Necessary.

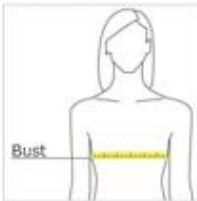


front



back

HOW TO MEASURE



BUST

Measure under the arm and around the fullest part of the bust with arms down, keeping tape horizontal.

SIZE CHART

	XS	S	M	L	XL	2XL	3XL	4XL
Size	2	4/6	8/10	12/14	16/18	20/22	24/26	28/30
Bust	32-34	35-38	37-38	39-41	42-44	45-47	48-51	52-55

COLOR INFORMATION



Anchor Grey
PMS 429C



Apple Red
PMS 200C



Blue Note
PMS NO MATCH



Deep Black
PMS BLACK C



Insignia Blue
PMS NO MATCH



Night Navy
PMS 532C



Townsend Green
PMS NO MATCH



White

PORT AUTHORITY.

Port Authority® Ladies Microfleece Vest. L226



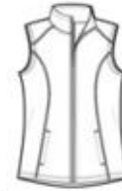
Add a layer of warmth with our extra soft, cozy microfleece vest. Lightweight, with an anti-pill finish, this cool-weather essential is also easy on the budget.

- 4.6-ounce, 100% polyester microfleece
- Clear coil zipper with dyed-to-match chain stitching and taping; grey chain stitching on White
- Non-zipped front pockets
- Open hem

CARE INSTRUCTIONS

Machine Wash Cold Separately Only Non-Chlorine Bleach
When Needed Tumble Dry Low Cool iron if necessary

[Tips For Effectively Screen Printing Polyester Fabrics](#)

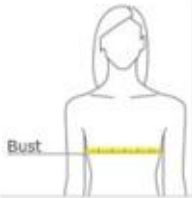


front



back

HOW TO MEASURE



BUST

Measure under the arm and around the fullest part of the bust with arms down, keeping tape horizontal.

SIZE CHART

	XS	S	M	L	XL	XXL	3XL	4XL
Size	2	4/6	8/10	12/14	16/18	20/22	24/26	28/30
Bust	32-34	35-36	38-40	41-43	44-46	47-49	50-53	54-57

COLOR INFORMATION



Black
PMS NTR BLACK
C



Pearl Grey