

PORT AUTHORITY.

Port Authority® SuperPro™ Twill Shirt. S663



A heavy hitter in performance, our SuperPro Twill Shirt easily resists stains and wrinkles while releasing stains. Designed for comfort, this versatile shirt functions well in almost any work environment from the office to food service.

- 3.4-ounce, 55/45 cotton/poly
- Button-down collar
- Back shoulder pleats
- Dyed-to-match buttons
- Left chest pocket
- Rounded adjustable cuffs

CARE INSTRUCTIONS

Machine wash warm with like colors. Non-chlorine bleach if needed. Tumble dry low. Remove promptly and hang. Warm iron if needed.

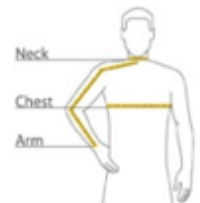


front



back

HOW TO MEASURE



CHEST WIDTH

Measure under the arm and around the fullest part of the chest with arms down, keeping tape horizontal.

NECK

Measure around the fullest part of the neck at the base.

ARM

Place hand on hip. Start at the center of the back of the neck and measure across the shoulder, to the elbow, and then down to the wrist.

SIZE CHART

	XS	S	M	L	XL	2XL	3XL	4XL
Chest	32-34	35-37	38-40	41-43	44-46	47-49	50-53	54-57
Neck	17	17	17 1/2	18	19	20	21	22
Arm	30 1/2	32	34	35	36 1/2	37 1/2	38 1/2	39 1/2

COLOR INFORMATION



Black
PMS NTR BLACK
C

Cloud Blue

Monument Grey
PMS COOL GRAY
9C

Rich Red
PMS 207C

Sterling Grey
PMS 425 C

True Blue
PMS 654C

True Navy
PMS 530C

Ultramarine Blue
PMS 7455C

White

PORT AUTHORITY.

Port Authority® Short Sleeve SuperPro™ Twill Shirt. S664



A heavy hitter in performance, our SuperPro Twill Shirt easily resists stains and wrinkles while releasing stains. Designed for comfort, this versatile shirt functions well in almost any work environment from the office to food service.

- 3.4-ounce, 55/45 cotton/poly
- Button-down collar
- Back shoulder pleats
- Dyed-to-match buttons
- Left chest pocket

CARE INSTRUCTIONS

Machine wash warm with like colors. Non-chlorine bleach if needed. Tumble dry low. Remove promptly and hang. Warm iron if needed.

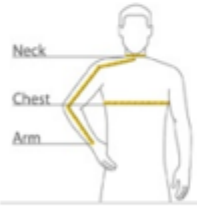


front



back

HOW TO MEASURE



CHEST WIDTH

Measure under the arm and around the fullest part of the chest with arms down, keeping tape horizontal.

NECK

Measure around the fullest part of the neck at the base.

ARM

Place hand on hip. Start at the center of the back of the neck and measure across the shoulder, to the elbow, and then down to the wrist.

SIZE CHART

	XS	S	M	L	XL	2XL	3XL	4XL
Chest	32-34	35-37	38-40	41-43	44-46	47-49	50-53	54-57
Neck	16 1/2	16 1/2	17	17 1/2	18 1/2	19 1/4	20	20 3/4

COLOR INFORMATION

Black PMS NTR BLACK C	Monument Gray PMS COOL GRAY 9C	Rich Red PMS 207C	Sterling Grey PMS 425 C	True Blue PMS 654C	True Navy PMS 533C	Ultramarine Blue PMS 7455C	White



MERCER+METTLE™ Stretch Heavyweight Pique Polo MM1000



Crafted in a heavier knit, this refined polo is just as comfortable as the classics from which it was inspired. The easy-moving fabric offers moisture wicking when the heat is on. The black satin-finished rimmed buttons on the placket and back collar extend a style-forward feel on the outside, while a dyed-to-match satin-twirl neck tape lies the inside.

Fabric+Weight

- 8.1-ounce, 58/39/3 cotton/poly/spandex diamond pique

Features+Benefits

- Moisture-wicking
- Button-backed, ribbed collar
- Dyed-to-match satin twill neck tape
- 2-button placket
- Rimmed, black satin-finished buttons
- Ribbed cuffs
- Notched vents

CARE INSTRUCTIONS

Machine Wash Cold With Like Colors. Do Not Use Fabric Softener. Do Not Bleach. Tumble Dry Low. Warm Iron If Necessary.

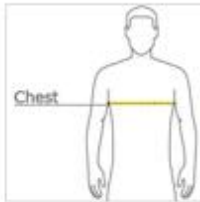


front



back

HOW TO MEASURE



CHEST WIDTH

Measure under the arm and around the fullest part of the chest with arms down, keeping tape horizontal.

SIZE CHART

	XS	S	M	L	XL	2XL	3XL	4XL
Chest	32-34	35-37	38-40	41-43	44-47	48-51	52-55	57-61

COLOR INFORMATION



Anchor Grey
PMS 420C



Apple Red
PMS 200C



Blue Note
PMS NO MATCH



Deep Black
PMS BLACK C



Insignia Blue
PMS NO MATCH



Night Navy
PMS 532C



Tommyland Green
PMS NO MATCH



White

PORT AUTHORITY.

Port Authority® Microfleece Vest. F226



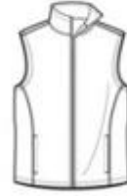
Add a layer of warmth with our extra soft, cozy microfleece vest. Lightweight, with an anti-pill finish, this cool-weather essential is also easy on the budget.

- 4.6-ounce, 100% polyester microfleece
- Clear coil zipper with dyed-to-match chain stitching and taping; grey chain stitching on White
- Non-zipped front pockets
- Open hem

CARE INSTRUCTIONS

Machine Wash Cold Separately Only Non-Chlorine Bleach
When Needed Tumble Dry Low Cool Iron if necessary

[Tips For Effectively Screen Printing Polyester Fabrics](#)

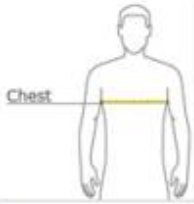


front



back

HOW TO MEASURE



Chest

CHEST WIDTH

Measure under the arm and around the fullest part of the chest
with arms down, keeping tape horizontal.

SIZE CHART

	XS	S	M	L	XL	2XL	3XL	4XL
Chest	32-34	35-37	38-40	41-43	44-46	47-49	50-53	54-57

COLOR INFORMATION



Black
PMS NTR BLACK
C



Light Royal
PMS 7685C



Peat Grey
PMS 424C



True Navy
PMS 5255C